

KENWOOD

COMPACT HI-FI COMPONENT SYSTEM

M-707i

INSTRUCTION MANUAL

Kenwood Corporation

**Declaration of Conformity with regard to the EMC Directive
2004/108/EC**

Manufacturer:

Kenwood Corporation

2967-3 Ishikawa-machi, Hachioji-shi, Tokyo, 192-8525 Japan

EU Representative's:

Kenwood Electronics Europe BV

Amsterdamseweg 37, 1422 AC UITHOORN, The Netherlands



Before applying power





⚠ Caution : Read this page carefully to ensure safe operation.

Units are designed for operation as follows.

Australia AC 240 V only
Europe AC 230 V only

Safety precautions

WARNING : TO PREVENT FIRE OR ELECTRIC SHOCK, DO NOT EXPOSE THIS APPLIANCE TO RAIN OR MOISTURE.

	CAUTION RISK OF ELECTRIC SHOCK DO NOT OPEN	
CAUTION: TO REDUCE THE RISK OF ELECTRIC SHOCK, DO NOT REMOVE COVER (OR BACK). NO USER-SERVICEABLE PARTS INSIDE. REFER SERVICING TO QUALIFIED SERVICE PERSONNEL.		
	THE LIGHTNING FLASH WITH ARROWHEAD SYMBOL, WITHIN AN EQUILATERAL TRIANGLE, IS INTENDED TO ALERT THE USER TO THE PRESENCE OF UNINSULATED "DANGEROUS VOLTAGE" WITHIN THE PRODUCT'S ENCLOSURE THAT MAY BE OF SUFFICIENT MAGNITUDE TO CONSTITUTE A RISK OF ELECTRIC SHOCK TO PERSONS.	
	THE EXCLAMATION POINT WITHIN AN EQUILATERAL TRIANGLE IS INTENDED TO ALERT THE USER TO THE PRESENCE OF IMPORTANT OPERATING AND MAINTENANCE (SERVICING) INSTRUCTIONS IN THE LITERATURE ACCOMPANYING THE APPLIANCE.	

The marking of products using lasers

**CLASS 1 LASER PRODUCT
LASER KLASSE 1
APPAREIL A LASER DE CLASSE 1
LUOKAN 1 LASERLAITE
KLASS 1 LASERAPPARAT**

The marking this product has been classified as Class 1. It means that there is no danger of hazardous radiation outside the product.

Location: Bottom

IMPORTANT SAFETY INSTRUCTIONS

⚠ Caution : Read this page carefully to ensure safe operation.

Read Instructions – All the safety and operating instructions should be read before the product is operated.

Retain Instructions – The safety and operating instructions should be retained for future reference.

Heed Warnings – All warnings on the product and in the operating instructions should be adhered to.

Follow Instructions – All operating and use instructions should be followed.

- 1. Cleaning** – Unplug this product from the wall outlet before cleaning. Do not use liquid cleaners or aerosol cleaners. Use a damp cloth for cleaning.
- 2. Attachments** – Do not use attachments not recommended by the product manufacturer as they may cause hazards.
- 3. Water and Moisture** – This product shall not be exposed to dripping and splashing – for example, near a bath tub, wash bowl, kitchen sink, or laundry tub; in a wet basement; or near a swimming pool; and the like. Do not place an object containing liquid, such as a flower vase, on the appliance.
- 4. Accessories** – Do not place this product on an unstable cart, stand, tripod, bracket, or table. The product may fall, causing serious injury to a child or adult, and serious damage to the product. Use only with a cart, stand, tripod, bracket, or table recommended by the manufacturer. Any mounting of the product should follow the manufacturer's instructions, and should use a mounting accessory recommended by the manufacturer.

A product and cart combination should be moved with care. Quick stops, excessive force, and uneven surfaces may cause the product and cart combination to overturn.
- 5. Ventilation** – Slots and openings in the cabinet are provided for ventilation and to ensure reliable operation of the product and to protect it from overheating, and these openings must not be blocked or covered. The openings should never be blocked by placing the product on a bed, sofa, rug, or other similar surface. This product should not be placed in a built-in installation such as a bookcase or rack unless proper ventilation is provided or the manufacturer's instructions have been adhered to.

6. Power Sources – This product should be operated only from the type of power source indicated on the product. If you are not sure of the type of power supply to your home, consult your product dealer or local power company.

7. CAUTION – Polarization – This product may be equipped with a polarized alternating-current line plug (a plug having one blade wider than the other). This plug will fit into the power outlet only one way. This is a safety feature. If you are unable to insert the plug fully into the outlet, try reversing the plug. If the plug should still fail to fit, contact your electrician to replace your obsolete outlet. Do not defeat the safety purpose of the polarized plug.

8. Power Cord Protection – Power-supply cords should be routed so that they are not likely to be walked on or pinched by items placed upon or against them, paying particular attention to cords at plugs, convenience receptacles, and the point where they exit from the product.

9. Lightning – For added protection for this product during a lightning storm, or when it is left unattended and unused for long periods of time, unplug it from the wall outlet and disconnect the antenna or cable system. This will prevent damage to the product due to lightning and power-line surges.

10. Overloading – Do not overload wall outlets, extension cords, or integral convenience receptacles as this can result in a risk of fire or electric shock.

11. Object and Liquid Entry – Never push objects of any kind into this product through openings as they may touch dangerous voltage points or short-out parts that could result in a fire or electric shock. Never spill liquid of any kind on the product.

12. Servicing – Do not attempt to service this product yourself as opening or removing covers may expose you to dangerous voltage or other hazards. Refer all servicing to qualified service personnel.

13. Damage Requiring Service – Unplug this product from the wall outlet and refer servicing to qualified service personnel under the following conditions:

- a) When the power-supply cord or plug is damaged,
- b) If liquid has been spilled, or objects have fallen into the product,
- c) If the product has been exposed to rain or water,
- d) If the product does not operate normally by following the operating instructions.
- e) If the product has been dropped or damaged in any way, and
- f) When the product exhibits a distinct change in performance – this indicates a need for service.
- g) If an abnormal smell or smoke is detected.

14. Replacement Parts – When replacement parts are required, be sure the service technician has used replacement parts specified by the manufacturer or have the same characteristics as the original part. Unauthorized substitutions may result in fire, electric shock, or other hazards.

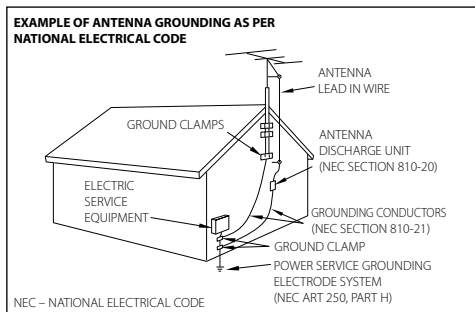
15. Safety Check – Upon completion of any service or repairs to this product, ask the service technician to perform safety checks to determine that the product is in proper operating condition.

16. Wall or Ceiling Mounting – This product should be mounted to a wall or ceiling only as recommended by the manufacturer.

17. Heat – This product should be situated away from heat sources such as radiators, heat registers, stoves, or other products that produce heat. Do not place a flaming object, such as a candle or lantern, or near the product.

18. Power Lines – An outside antenna system should not be located in the vicinity of overhead power lines or other electric light or power circuits, or where it can fall into such power lines or circuits. When installing an outside antenna system, extreme care should be taken to keep from touching such power lines or circuits as contact with them might be fatal.

19. Outdoor Antenna Grounding – If an outside antenna or cable system is connected to the product, be sure the antenna or cable system is grounded so as to provide some protection against voltage surges and built-up static charges. Article 810 of the National Electrical Code, ANSI/NFPA 70, provides information with regard to proper grounding of the mast and supporting structure, grounding of the lead-in wire to an antenna discharge unit, size of grounding conductors, location of antenna-discharge unit, connection to grounding electrodes, and requirements for the grounding electrode.




Notes:

1. Item 7 is not required except for grounded or polarized equipment.
2. Item 19 complies with UL in the U.S.A.

Before use

Contents

Caution : Read the pages marked  carefully to ensure safe operation.

Before applying power.....2
Safety precautions.....2

IMPORTANT SAFETY INSTRUCTIONS2

Before use4
Contents4
Unpacking4
Description of the button name in this manual.....5
Preparing the remote control unit5

Connections6

About MP3 and WMA8

About USB device9

Supported iPod.....9

Handling discs.....9

Names and functions of parts10

Basic function12
Demonstration mode.....12
Switching the system on.....12
Switching the system to standby mode.....12
Volume control12
Sound control.....12
Headphones.....12

Using the CD/USB device13
Preparation.....13
Playing a CD/ audio file13
Selecting a desired file by file name
(For audio file only)14
Programming tracks/files.....14
Random play.....15
Repeat play.....15
Intro scan (For CD only)15
Recording on a USB device (For CD only).....15
Program recording (For CD only)16
Changing the display of the disc/USB device
information16

Using the iPod.....16
Playing an iPod16
Repeat play.....16
Random play.....16

Using the radio17
Tuning in radio stations.....17
Storing preset17
Tuning to a preset radio station.....17
Using RDS (Radio Data System).....17
Changing the RDS display information.....18
Tuning by Program Type (PTY search).....18

Using the cassette.....19
Playing a cassette tape.....19
Recording on a cassette tape.....19

Clock/timer operation20
Clock setting.....20
Timer setting20
To activate/deactivate the timer.....21
Sleep timer setting21

In case of difficulty.....22

General information.....23
Maintenance23

Specifications.....24
Main unit.....24
Speakers24
iPod dock.....24

Unpacking

Unpack the unit carefully and make sure that all accessories are present.

FM indoor antenna.....(1)
AM loop antenna.....(1)
iPod dock.....(1)
iPod dock adapter.....(5)
Remote control unit
with a built-in button battery.....(1)

If any accessories are missing, or if the unit is damaged or falls to operate, notify your dealer immediately. If your unit was shipped to you directly, notify your shipper immediately. Kenwood recommends that you retain the original carton and packing materials in case you need to move or ship the unit in the future.

Keep this manual handy for future reference.

Description of the button name in this manual

Most of the functions are designed to be able to operate from the remote control unit. Therefore, in this manual, the button names are described using the names on the remote control unit first, followed by names on the main unit put in parenthesis.

Example:

X-BASS [X-bass] button


↑
Button on the main unit
↑
Button on the remote control unit

Preparing the remote control unit

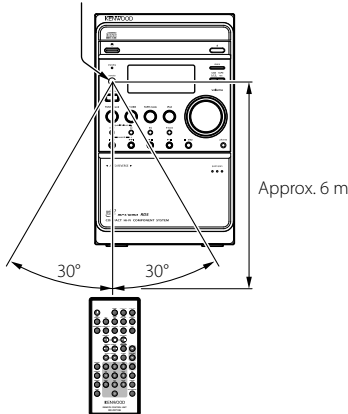
Pull the battery sheet out from the remote control unit to the direction of the arrow.



Operation

When the power cord is plugged in, **standby** indicator is lit. The power turns ON by pressing  button on the remote control unit pointing at the remote sensor. When the power comes on, press the button you want to operate.

Remote sensor

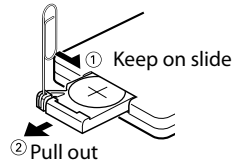


- The supplied battery may have shorter live than ordinary battery due to use during operation checks.
- When the remote-controllable distance gets shorter than before, replace the battery with a new one.
- Placing the remote sensor in direct sunlight, or in direct light from a high frequency fluorescent lamp may cause a malfunction.
In such a case, change the location of the system installation to prevent malfunction.

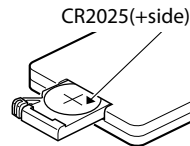
Changing the battery of the remote control unit

Use a commercially available button battery (CR2025).

- 1 Insert something narrow like a paperclip into the hole 1 and pull out the battery tray.



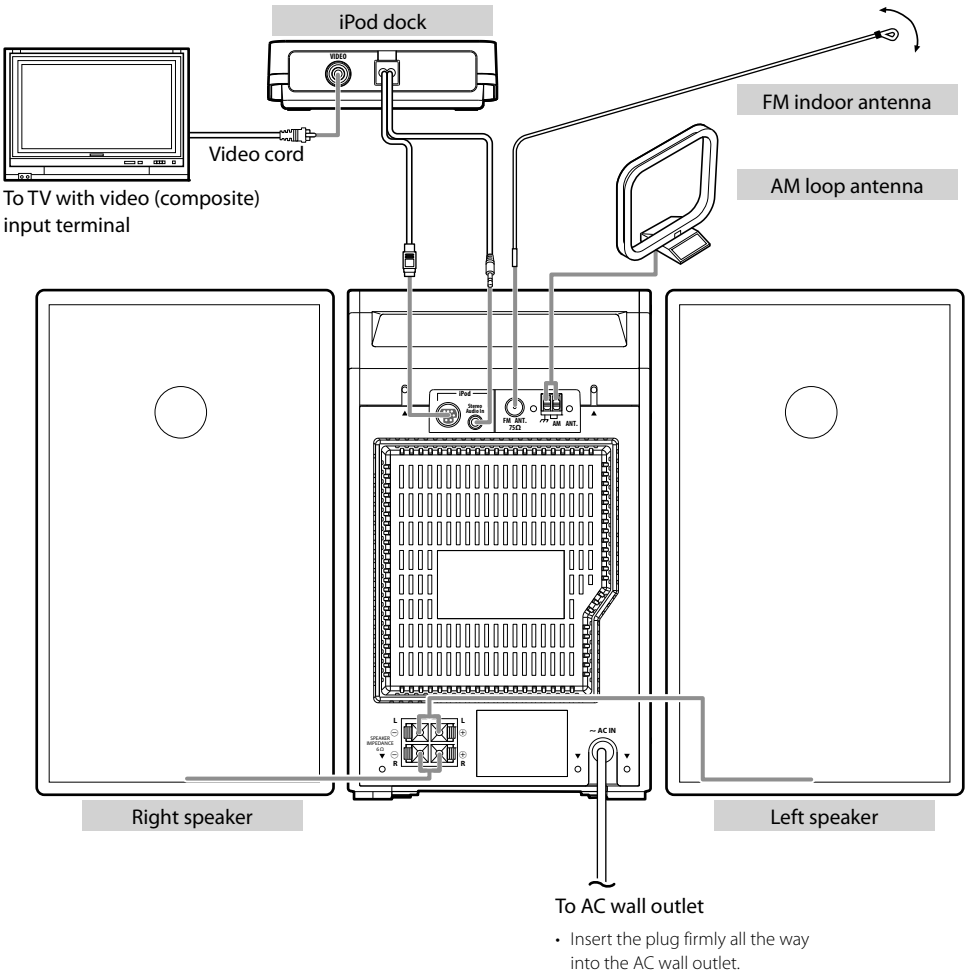
- 2 Replace the old battery with a new one.



⚠ CAUTION

- Lithium battery.
Danger of explosion if the battery is incorrectly replaced. Replace only with the same or equivalent type.
- The battery pack or batteries shall not be exposed to excessive heat such as sunshine, fire or the like.
- Keep battery out of reach of children and in original package until ready to use. Dispose of used batteries promptly. If swallowed contact physician immediately.

Connections



⚠ CAUTION

Be sure to adhere to the following, or proper ventilation will be blocked causing damage or fire hazard.

- Do not place any objects impairing heat radiation onto the top of the unit.
- Leave some space around the unit (from the largest outside dimension including projection) equal to or greater than, shown below.

Top panel : 50 cm Back panel : 10 cm

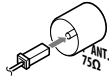
⚠ CAUTION

The power in this equipment will not be completely cut off from the wall outlet when the standby switch is turned off. Install the equipment so that the wall outlet is easily accessible and, in case of emergency, immediately unplug the power plug from the wall outlet.

Mains plug is used as the disconnect device. It shall remain readily operable and should not be obstructed during intended use.

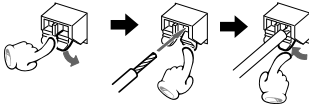
Connecting the FM antenna

- 1 Connect the lead to the [FM ANT. 75Ω] terminal.
 - 2 Find the location that gives the best reception.
 - 3 Secure the antenna as high up as possible.
- The antenna supplied with the system is a basic antenna for indoor use. For stable signal reception, the use of an outdoor antenna (commercially available) is recommended. Disconnect the indoor antenna first before connecting an outdoor antenna.

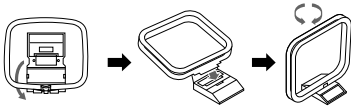


Connecting the AM antenna

- 1 Connect the AM antenna cord to the [AM ANT.] and [77] terminals.



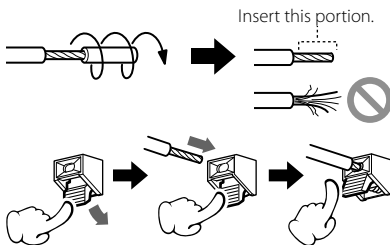
- 2 Setup the antenna in the position and the direction to be able to receive AM broadcast.



- The antenna supplied with the system is for indoor use. Place it as far away as possible from the system, your TV set, the speaker cords, AC adapter and the power cord, and point it in the direction that provides the best reception.

Connecting the speakers

- 1 Connect the right speaker to terminal marked "R", with the red wire to + and the black wire to -.
- 2 Connect the left speaker to terminal marked "L", with the red wire to + and the black wire to -.



- For optimal sound performance, it is recommended to use the supplied speakers.
- Do not connect more than one speaker to any one pair of +/- speaker terminals.

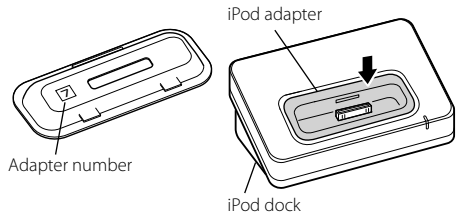
Connecting the iPod adapter

Compatibility of iPod adapter

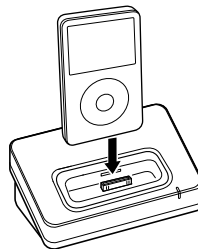
iPod description	Capacity	Adapter number
iPod mini	4 GB & 6 GB	3
4G iPod & U2 iPod	20 GB	4
4G iPod	40 GB	5
iPod photo & Color U2 iPod	20 GB & 30 GB	6
iPod with color display	20 GB	6
	60 GB	7
iPod photo	40 GB & 60 GB	7

- If your iPod is supplied with a dock adapter, use the supplied dock adapter.
- See page 9 for the supported iPod models.

- 1 Choose the iPod adapter that fits your iPod.
- 2 Insert the iPod adapter into unit.

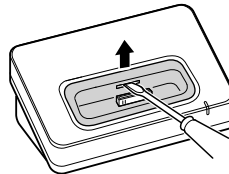


- 3 Connect your iPod.



To remove iPod adapter

- Insert a thin object such as the tip of a flat-blade screwdriver into the slit on the dock adapter and lift it to remove.



About MP3 and WMA

The playable MP3/WMA file (hereafter called **Audio file**) and the media format have the following limitation. The Audio file, which is not conforming to the specification, may not play normally.

Playable Audio file

Playable MP3 file

- File formats: MPEG 1/2 Audio Layer 3 file
- Extension: .mp3
- Transfer bit rate: 8 kbps – 320 kbps
- Sampling frequency: 48/ 44.1/ 32/ 24/ 22.05/ 16/ 12/ 11.025/ 8 kHz

Playable WMA file

- File format: Windows Media™ Audio compliant
- Extension: .wma
- Transfer bit rate: 32 kbps – 320 kbps
- Sampling frequency: 48/ 44.1/ 32 kHz
- Files created using functions in Windows Media™ Player 9 or later cannot be played.
 - WMA Professional
 - WMA Lossless
 - WMA Voice



- Do not attach the extensions to files other than the Audio file. If the extension is attached, the file, which is not the Audio file, will play and outputs a loud noise, causing damage to the speaker.
- The files with copy protection cannot be played.
- Audio files cannot be played depending on the encoding software setting, USB device type, and/or recording conditions.
- The unit may not be compatible with upgrade of compression format standard and additional specifications.
- Audio files encoded using VBR (Variable Bit Rate) may use bit rates that fall outside the supported range. Audio files with bit rates outside the supported range cannot be played.

Playable storage media

- CD-ROM, CD-R, CD-RW
- USB device (USB version 1.1/2.0)



- CD-RW discs which are quick formatted by the writing software cannot be used.
- When recording to the maximum CD-R/RW media capacity at once, the writing software is set to "Disc at once".
- For details on the available USB devices, refer to <About USB device> (page 9).

Playable CD-R/RW format

- ISO 9660 Level 1/2
- Joliet

Playable file format of USB device

- For the formats supported by USB devices, refer to <About USB device> (page 9).

The maximum number of characters for display

- File/Folder name: 30/30 characters
- MP3 ID3 Tag/ WMA Contents property: 32 characters
(The information which can be displayed with this unit: title, artist name, and album name)



- File/Folder name is the number of the characters including the extensions.
- This unit can display the following versions of MP3 ID3 tag: version 1.0/ 1.1/ 2.2/ 2.3

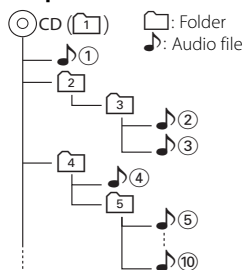
Limitation of structure for the file and the folder

- Maximum number of folders: 255 (including root folder)
- Maximum number of files per folder: 900 (including the number of folders)

Playing order of the audio file

- Audio files are played in the order the files are written. You can specify the order of playback by numbering files in a folder and writing them by folder.

Example



• Playing order

Playing order after 1 play:

➔ 2, 3, 4, 5...

About USB device

Notes on use of the USB device

This unit can play audio files stored in the flash memory and digital audio player that have a USB port (these devices are referred to as USB devices in this document).

The following restrictions are placed on the types and usage of available USB devices:

Available USB devices

- USB devices belonging to the USB mass storage class.
- USB devices whose maximum current consumption is 500 mA or less.
- Supported formats and USB device types : FAT 16/ 32



- **USB Mass Storage Class** : USB devices that the PC can recognize as an external storage without using any special driver or application software.
- Contact the sales agent as to whether your USB device conforms to the USB mass storage class specs.
- Using an unsupported USB device can result in abnormal playback or display of the audio file.
Even if you use the USB device conforming to the above specs, audio files cannot be played normally depending on the type or condition of the USB device.

Supported iPod

iPod description

iPod mini

4G iPod & U2 iPod

4G iPod

iPod photo & Color U2 iPod

iPod with color display

iPod photo

iPod nano

5G iPod (with video)

U2 iPod with video

iPod classic

iPod nano (2nd generation)

iPod nano (3rd generation)

iPod touch



- Be sure to update the software of your iPod to the latest version. The latest iPod software updater can be downloaded from the Apple website.
- The iPod cannot be connected together with its accessories such as the cover or case. Be sure to remove any accessories before connecting the iPod.
- Video output setting of iPod needs to be set on your iPod.
- When the iPod is detached from the iPod dock, the TV Out setting of the iPod may sometimes be set to On. Check this setting if the iPod cannot display video.

Handling discs

Handling precautions

Hold a CD taking care not to touch the played surface. (The side without the printed label is the playback side.)

Discs playable on the system

This system can play back a CD (12 cm, 8 cm), CD-ROM, CD-R, CD-RW or the audio part of a CD-EXTRA disc.

Notes on CD-ROM/CD-R/CD-RW discs

If the CD-ROM, CD-R or CD-RW disc in use has a printable label surface, the disc may be unable to be taken out of the system due to sticking of the label surface. To prevent malfunction of the system, do not use such a disc.

Cautions on CD discs

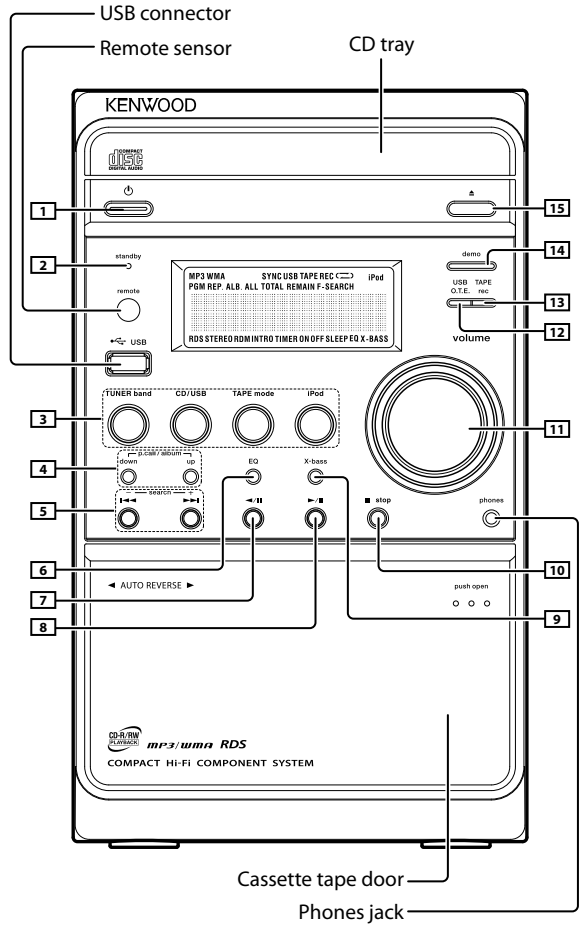
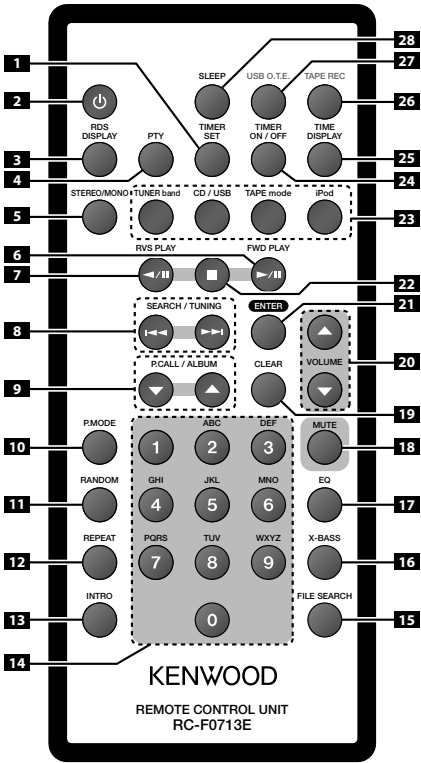
Always use a CD carrying the  marking.

A disc without this marking may be unable to be played back correctly.

The disc rotates at a high speed during playback. Never use a cracked, chipped or greatly warped disc. Otherwise, damage or malfunction of the player may result.

Also, do not use a disc with a non-circular shape as this may result in malfunction.

Names and functions of parts



- 1** **TIMER SET** button
To set the clock.
To set the timer.
- 2** **1**  button
To switch the system on or to standby mode.
- 2** **[standby]** indicator
- 3** **RDS DISPLAY** button
To change the display for RDS.
- 4** **PTY** button
To carry out PTY search.
- 5** **STEREO/MONO** button
To switch between stereo mode and mono mode (on FM band only) for TUNER.
- 6** **8** **FWD PLAY ▶/II [▶/II]** button
To start or interrupt playback for CD, audio file, iPod and TAPE.
To start or interrupt recording for TAPE.
- 7** **7** **RVS PLAY ◀/II [◀/II]** button
To start or interrupt playback for TAPE.
To start or interrupt recording for TAPE.
- 8** **5** **SEARCH/TUNING ◀◀ / ▶▶ [◀◀ / ▶▶] search + / -** buttons
To search forward/backward to next/previous track for CD.
To skip tracks for CD.
To search forward/backward or to skip to the next/previous files for audio files and iPod.
To fast forward or rewind a tape.
To tune to higher/lower radio frequency or search radio stations for TUNER.
- 9** **4** **P.CALL/ALBUM ▲ / ▼ [p.call/album up / down]** buttons
To select a preset radio station for TUNER.
To select an album (folder) of audio files and iPod.
- 10** **P.MODE** button
To program tracks/files for CD and audio file.
To program preset radio stations for TUNER.
- 11** **RANDOM** button
To playback in random order for CD, audio file and iPod.
- 12** **REPEAT** button
To repeat one track/file or all tracks/files for CD, audio file and iPod.
- 13** **INTRO** button
To play first several seconds for each track of CD.
- 14** **digit 0 – 9/ A – Z** buttons
To select a track/file number for CD and audio file.
To select a preset radio station for TUNER.
To enter file names in file search mode for audio files.
- 15** **FILE SEARCH** button
To select a desired file in audio files.

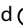
- 16** **9** **X-BASS [X-bass]** button
To switch on/off bass enhancement.
- 17** **6** **EQ [EQ]** button
To select the desired sound effect : POP, CLASSIC, ROCK, JAZZ, or FLAT (off).
- 18** **MUTE** button
To interrupt and resume sound reproduction.
- 19** **CLEAR** button
To delete the track/file number entered during track/file search.
To delete the file name entered during file search.
- 20** **11** **VOLUME ▲ / ▼ buttons [volume knob]**
To increase or decrease the volume.
- 21** **ENTER** button
To confirm the selection in track/file search mode for CD and audio file.
- 22** **10** **■ [■ stop]** button
To stop playback for CD, audio file and TAPE.
To stop program playback and recording for CD and audio file.
To stop recording for USB and TAPE.
- 23** **3** **Source** buttons
To select the source you want, or to turn the system on to the selected source.
- 24** **TIMER ON/OFF** button
To switch the timer on/off.
- 25** **TIME DISPLAY** button
To change the time display for CD.
To change the information display for audio files.
- 26** **13** **TAPE REC [TAPE rec]** button
To start recording from TUNER, CD, audio file or iPod to a cassette tape.
- 27** **12** **USB O.T.E. [USB O.T.E.]** button
To record from CD to a USB device.
- 28** **SLEEP** button
To select the sleep time.
- 14** **[demo]** button
To activate/deactivate the demonstration in power on mode.
- 15** **[▲]** button
To open or close the CD tray.

Standby mode

While the standby indicator is lit, a small amount of power is supplied to the system to back up the memory. This is called standby mode. Under the condition, the system can be turned ON by the remote control unit.

Basic function

Demonstration mode

The system is equipped with a demonstration function (only display). When the power cable is plugged in and  button is pressed to turn the system on for the first time, the demonstration automatically starts. The demonstration consists of sequential change of display and indicators showing the operations, but the audio itself does not change. The demonstration function can be cancelled as follows.

To deactivate the demonstration

Press [demo] button on the main unit during demonstration.



To activate the demonstration

After turning the power on, press [demo] button on the main unit.



- The demonstration operates automatically when; a power has failed and then recovered, or the plug of the power cable has been pulled out while the power was on and then plugged back in.

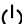
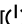
Switching the system on

Press  ([]), CD/USB [CD/USB], TUNER band [TUNER band], TAPE mode [TAPE mode], iPod [iPod] button.

The [standby] LED will go out.



The system will switch to the last selected source or the selected source.

Switching the system to standby mode

Press  ([]) button.

[standby] indicator is lit.

Volume control

Press VOLUME  (turn [volume] knob to the right) button to increase, or press VOLUME  (turn [volume] knob to the left) to decrease the volume level.

“VOL XX” is displayed. “VOL XX” denotes the volume level.

To switch off the volume temporarily

Press MUTE button.

Playback continues without sound, and “MUTE” is displayed.



- To restore the volume, press MUTE button again or adjust the volume.

Sound control

The sound control system feature enables you to enjoy special sound effects; preset equalizer settings and bass enhancement, providing the best music reproduction.

To switch on preset equalizer settings

Press EQ [EQ] button to select the desired sound effect: POP, CLASSIC, ROCK, JAZZ or FLAT (off).

When an effect other than FLAT is selected, the “EQ” icon appears on the display.

To switch on the bass enhancement

Press X-BASS [X-bass] button.

The icon “X-BASS” appears on the display.



- To switch off X-BASS, press X-BASS [X-bass] button. The icon “X-BASS” disappears.
- EQ and X-BASS functions are not applied to the recording sound.

Headphones

To listen to your stereo with headphones (separately available), use the 3.5 mm phones jack on the main unit.



- Excessive sound pressure from earphones and headphones can cause hearing loss.

Using the CD/USB device

Preparation

Loading a disc

- 1 Press **CD/USB [CD/USB]** button to select CD mode.
- 2 Press **[▲]** button to open the CD tray.
- 3 Place a disc into the tray with the label facing up.
- 4 Press **[▲]** button to close the CD tray.
For a CD, the total playtime and total number of tracks will appear in the display.
For an audio file-CD, the total album number and total file number will appear on the display.

Removing a disc

- 1 Press **[▲]** button, grasp the disc by its edges, and carefully pull it out.
- 2 Press **[▲]** button to close the CD tray.

Inserting a USB device

- 1 Press the **⏻** button to select standby mode.
- 2 Insert a USB device to the USB connector on the front panel.
- 3 Press **CD/USB [CD/USB]** button to select USB mode.
Press the **CD/USB [CD/USB]** button in the CD mode.
The total album number and total file number will appear on the display.

Removing the USB device

- 1 Press the **⏻** button to select standby mode.
- 2 Remove the USB device.



- To ensure good system performance; wait until the unit completely reads the disc/USB device before proceeding.
- If the disc compartment is not loaded with a disc, "NO DISC" is displayed. If the disc is unreadable, "CHECK DISC" is displayed.
- If the disc is unreadable or there is no playable audio file in the USB device, "NO DATA" is displayed.
- For audio files, reading time may exceed 10 seconds due to the large number of songs compiled into one disc/USB

device.

- The icon "MP3" appears only when an MP3-file is played.
The icon "WMA" appears only when an WMA-file is played.
- When playing or recording from/to the USB device, removing it or turning the power off may corrupt the sound source and get it unplayable.

Playing a CD/ audio file

Press **FWD PLAY ►/II [►/II]** button to start playback.

The track/file number and elapsed playing time of the current track/file appear on the display.

Basic operations

Operation type	Operation
To stop playback	Press ■ [stop] button.
To interrupt playback	Press FWD PLAY ►/II [►/II] button. Press again to resume playback.
To search for a particular passage during playback	Press and hold SEARCH/TUNING ◀◀◀ or ▶▶▶ [search +/-] button for more than 2 seconds. Press the FWD PLAY ►/II [►/II] button when the desired passage is located.
To select a track/ file	Press SEARCH/TUNING ◀◀◀ or ▶▶▶ [search +/-] button in play or pause mode.
To select a album (For audio file only)	Press P.CALL/ALBUM ▲ or ▼ [p.call/album up or down] button in play or pause mode.



- For audio file; "DIR:xxx TRK:xxx" appears on the display. "DIR:xxx" indicates album number and "TRK:xxx" indicates the file number.
- The digit buttons, 0-9 on the remote control unit can also be used to select a track/file.

Press the digit buttons as shown below:

	CD	Audio file
To select track/file 2	2 and ENTER	2 and ENTER
To select track/file 23	2 and 3	2, 3 and ENTER
To select file 120	—	1, 2 and 0

If the **ENTER** button is not pressed, the search for the selected track/file will start in 5 seconds.

Selecting a desired file by file name (For audio file only)

- 1 In stop mode, press FILE SEARCH button.**
The icon "F-SEARCH" appears on the display.
- 2 Press the digit buttons A-Z to input the first character of the file name you want to search.**
- 3 Press ENTER button.**
"_" appears and flashes on the next of the first character.
- 4 Repeat step 2 and 3 to enter the characters until the one before the last character.**
- 5 For the last character, press the digit buttons A-Z to input.**
- 6 Press FILE SEARCH button.**
"SEARCHING" appears on the display.
- 7 Press FWD PLAY ►/II [►/II] button to start playback.**



- If the unit finds an appropriate file, the route name and the file name will be scrolled on the display. Press **TIME DISPLAY** button. Then the album number and track number will be displayed.
- If there is no appropriate file, "NO FILE" is displayed.

Programming tracks/files

Programming tracks/files of a CD/audio file is possible when playback is stopped. Up to 60 tracks can be stored in the memory in any order.

- 1 In stop mode, press P.MODE button to enter program setting.**
The icon "PGM" and "-- P-01"/"--- P-01" appears on the display.
"--" indicates track number of the CD.
"---" indicates file number of the audio file.
"P-01" indicates program number.
The icon "PGM" starts flashing.
- 2 Press P.CALL/ALBUM ▲ or ▼ [p.call/album up or down] button, or digit buttons 0-9 to select the desired track/file.**
- 3 Press ENTER button to store the selected track/file.**
The track/file number returns to "--"/"---" and the next program number appears on the display.

- 4 Repeat steps 2 to 3 to select and store other desired tracks/files in this way.**

The icon "PGM" appears on the display.

- 5 Press FWD PLAY ►/II [►/II] button to play the programmed tracks/files.**



- "PROG ITEM FULL" appears on the display, if you attempt to program more than 60 tracks/files.
- Audio files can only be programmed within the same source.
- To modify a program, press the **ENTER** button in stop mode. Press the **ENTER** button to select the desired program number.
Now enter the new track/file number with either method below.
 - Press the **P.CALL/ALBUM ▲ or ▼ [p.call/album up or down]** button to select the desired track/file.
 - Press the **CLEAR** button to clear the track/file number programmed. Select the new track/file number using digit buttons "0" to "9" on the remote control unit.
- If you press **REPEAT** button during programmed playback, the current track or all programmed tracks/files is/are played repeatedly.
The icon "REP" or "REP. ALL" and the icon "PGM" appear on the display.
- Only for CD: If you press the **INTRO** button during programmed playback, the first 10 seconds of every track/file in the program will be played in sequence.
The icon "INTRO" and the icon "PGM" appear on the display.

To clear the program

Press **■ [stop] button once in stop mode, and twice during program playback.**

The icon "PGM" disappears from the display.



- "P" represents PROGRAM.
- The program is automatically cleared as soon as the CD tray is opened.
- The function of program setting cannot be used in PLAY/PAUSE mode.

Random play

You can play all the tracks/files in random order.

- 1 During playing, pause or stop mode, press **RANDOM** button to enable random play mode.

The icon "RDM" appears on the display.

- 2 To exit RDM mode, press **RANDOM** button again.

The icon "RDM" disappears from the display.

Repeat play

You can play the current track/file/album or the whole disc/USB device repeatedly.

Press **REPEAT** button in play or pause mode.

Every time the button is pressed, the repeat play changes in the following order:

For CD :

Repeat mode	Icon
Repeat a single track	"REP"
Repeat all the tracks *1	"REP. ALL"
Repeat off	—

For audio file :

Repeat mode	Icon
Repeat a single file	"REP"
Repeat one album *2	"REP. ALB."
Repeat all the files *1	"REP. ALL"
Repeat off	—



- *1 All tracks/files are repeated continuously.
- *2 This function cannot be used in program mode.

Intro scan (For CD only)

This function let you listen to the first 10 seconds of each track throughout the CD.

Press **INTRO** button to start scanning.

The icon "INTRO" appears on the display.

To stop the intro scan

Press **INTRO** button again.

The unit enters normal play mode and starts playing from where you stop the scanning.

Recording on a USB device (For CD only)

Records songs in the CD to the USB device in MP3 format.

- 1 Insert a USB device to the USB connector on the front panel.

- 2 To record all the tracks: **Stop** playback.

To record a single track:

Play the track to be recorded.

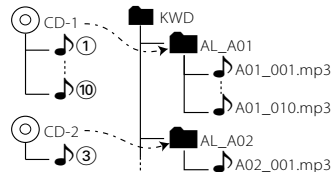
- 3 Press **USB O.T.E. [USB O.T.E.]** button to begin recording.

The icon "SYNC USB REC" appears on the display.

- 4 To end recording, press **[■ stop]** button.



- During recording, it is not possible to listen to another source.
- The recorded music files and folders accommodating them are numbered automatically. These number can later be modified.
 - Numbers assigned to folders: AL_A01...AL_A99...AL_Z99
 - Numbers assigned to music files: A01_001.mp3, A01_002.mp3.../A99_001.mp3.../Z99_001.mp3...
 - Example



- Music is encoded according to specification below.
 - Format: MP3
 - Transfer bit rate: 192 kbps
 - Sampling frequency: 44.1 kHz
- Recordable USB device
 - USB standard: USB 1.1/2.0
 - File system: FAT 16/32

Program recording (For CD only)

Desired CD tracks can be programmed in the desired sequence and recorded onto a USB device.

- 1 Insert a USB device to the USB connector on the front panel.
- 2 Program the desired sequence of CD tracks.
See page 14 for programming procedure.
- 3 Press USB O.T.E. [USB O.T.E.] button to begin recording.
The icon "SYNC USB REC" appears on the display.



- To end recording, press **[■ stop]** button.

Changing the display of the disc/USB device information

Press TIME DISPLAY button in play or pause mode.

Every time the button is pressed, the display changes in the following order:

For CD :

Information	Icon
Status display	—
The current track elapsed time.	—
The current track remaining time.	"REMAIN"
The whole disc elapsed time.	"TOTAL"
The whole disc remaining time.	"TOTAL REMAIN"
The whole CD time.	—

For audio file :

Information	Icon
Status display	—
Album name and file name.	—
Tag information (Track, album title and artist name).	—
Album number and track number.	—

Inserting an iPod

- 1 Connect a iPod to the iPod dock.
- 2 Press iPod [iPod] button.
The icon "iPod" appears on the display.

Playing an iPod

Press FWD PLAY ►/II [►/II] button to start playback.

Basic operations

Operation type	Operation
To interrupt playback	Press FWD PLAY ►/II [►/II] button. Press playback to resume playback.
To search for a particular passage during playback	Press and hold SEARCH/TUNING I◀◀ or ►►I [I◀◀ or ►►I search +/-] button. Release to resume the playback.
To select a song	Press SEARCH/TUNING I◀◀ or ►►I [I◀◀ or ►►I search +/-] button.
To select a album *1	Press P.CALL/ALBUM ▲ or ▼ [p.call/album up or down] button.



- *1 The operation varies depending on the model of iPod.

Model other than iPod touch	iPod touch
The operation is available when one of the following items is selected.	The album is switched to the next album found by following the alphabetical order of track names.
Browse item	Selection
Artists, Composers	All Albums
Albums, Compilations	All Songs
Genres	All Artists
	— Example Track-A1 Album-A Track-B1 Album-B Track-B2 Album-B Track-C1 Album-C

Repeat play

You can play the current song or the all songs repeatedly.

Press REPEAT button.

Every time the button is pressed, the repeat play changes in the following order:

Repeat mode	Icon
Repeat a single song	—
Repeat all songs	—
Repeat off	—

Random play

You can play all the album in random order.

Press RANDOM button.

Each time you press the button, Random Play turns ON or OFF.



- The displayed icon may not match the actual operation with certain iPod models.

Using the radio

Tuning in radio stations

- 1 Press **TUNER band [TUNER band]** button to select the desired waveband: **FM** or **AM**.
- 2 Press and hold **SEARCH/TUNING** **◀◀** or **▶▶** [**◀◀** or **▶▶**] **search +/-** button to tune in to the desired frequency.



- To tune to a weak station, briefly press **SEARCH/TUNING** **◀◀** or **▶▶** [**◀◀** or **▶▶**] **search +/-** button repeatedly until the display shows the desired frequency or when the best reception has been obtained.

STEREO/MONO

Press the **STEREO/MONO** button to select mono or stereo mode.

When stereo mode is selected, the icon "STEREO" appears on the display (if current station is FM stereo).



- You are able to select stereo or mono mode in FM band only.

Storing preset

You can store up to 20 for FM and 10 for AM radio stations in the memory. When a preset radio stations selected, the preset number appears on the display.

- 1 Press **TUNER band [TUNER band]** button to select the desired waveband: **FM** or **AM**.
- 2 Press **SEARCH/TUNING** **◀◀** or **▶▶** [**◀◀** or **▶▶**] **search +/-** button to tune in to the desired frequency.
- 3 Press **P.MODE** button so that "P - -" appears on the display.
- 4 If you want to store the radio station to another preset number, press **P.CALL/ALBUM** **▲** or **▼** [**p.call/album up or down**] to select the desired preset number.
- 5 Press **ENTER** button again to store the radio station.
- 6 Repeat steps 2 to 5 to store other preset radio stations.



- During program, if no button is pressed within 20 seconds, the system will exit program mode automatically.

Tuning to a preset radio station

Press **P.CALL/ALBUM** **▲** or **▼** [**p.call/album up or down**], or digit buttons **0-9** to select the desired preset number.

The preset number and radio frequency appear on the display.



- Press the digit buttons as shown below:

	FM	AM
To select 1	1 and ENTER	1 and ENTER
To select 2	2 and ENTER	2
To select 3	3	3
To select 10	1 and 0	1 and 0

Using RDS (Radio Data System)

RDS is a system that transmits useful information (in the form of digital data) for FM broadcasts along with the broadcast signal. Tuners and receivers designed for RDS reception can extract the information from the broadcast signal for use with various functions, such as automatic display of the station name.

RDS functions

PTY (Program TYPE Identification) Search:

Automatically tunes to a station that is currently broadcasting the specified program type (genre).

PS (Program Service Name) Display:

Automatically displays the station name transmitted by the RDS station.

Radio Text function:

Displays the radio text data transmitted by some RDS stations when you press the **RDS DISPLAY** button. There is "NO TEXT" display if no text data is transmitted.



- Some functions and function names may differ in certain countries and areas.

Changing the RDS display information

While receiving a RDS station, pressing the **RDS DISPLAY** button changes the contents of the display.

Every time the button is pressed, the display changes in the following order:

Information
PS (Program Service name) display
PTY (Program TYPe) display
RT (Radio Text) display
Frequency display and preset number display

Tuning by Program Type (PTY search)

This function lets you set the tuner to automatically search for stations which are currently broadcasting the type of program (genre) you want to listen to.

1 Press TUNER band [TUNER band] button to select FM.

2 Press PTY button.

If the current station is with RDS, the program type of the station is displayed.

3 Press SEARCH/TUNING \leftarrow or \rightarrow [\leftarrow or \rightarrow] search +/-] button to select your desired program type.

Program type table

Program Type Name	Display
News	"NEWS"
Current Affairs	"AFFAIRS"
Information	"INFO"
Sport	"SPORT"
Education	"EDUCATE"
Drama	"DRAMA"
Culture	"CULTURE"
Science	"SCIENCE"
Varied Speech	"VARIED"
Pop Music	"POP M"
Rock Music	"ROCK M"
Easy Music	"EASY M"
Light Classical Music	"LIGHT M"
Serious Classical Music	"CLASSICS"
Other Music	"OTHER M"
Weather	"WEATHER"
Finance	"FINANCE"
Children's Program	"CHILDREN"
Social Affairs	"SOCIAL"
Religion	"RELIGION"
Phone In	"PHONE IN"
Travel	"TRAVEL"
Leisure	"LEISURE"
Jazz Music	"JAZZ"
Country Music	"COUNTRY"
National Music	"NATION M"

Oldies Music	"OLDIES"
Folk Music	"FOLK M"
Documentary	"DOCUMENT"


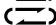




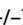




4 Press PTY button to start searching.



- Under certain receiving conditions, it may take more than 1 minute to complete the search.
- If the desired program type cannot be found, "PTY NO MATCH" is displayed, then after several seconds the display returns to the original display.

Using the cassette

Playing a cassette tape





- 1 Press TAPE mode [TAPE mode] button to TAPE.
- 2 Press the area marked [push open] to open the cassette tape door.
- 3 Insert cassette tape into the compartment with the open edge facing down.
- 4 Close the door securely.
- 5 Press TAPE mode [TAPE mode] button to select the desired reverse mode.
 -  icon : plays both sides and stops.
 -  icon : plays both sides endlessly.
 -  icon : plays only one side of the tape and stops.
- 6 Press SEARCH/TUNING  or  [ or ] search +/- button to move tape to the desired starting point.
- 7 Press FWD PLAY /II [/II] or RVS PLAY /II [/II] button to begin playing the tape.

Recording on a cassette tape

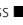




You can record from a radio, a CD, a audio file, or a iPod.

For the best recording, use a normal bias tape (Type 1 only).





Recording from a radio

- 1 Insert a cassette tape into the tape compartment and close the door.
- 2 Press TUNER band [TUNER band] button to TUNER and select a radio station.
- 3 Press TAPE REC [TAPE rec] button to set the unit into recording standby mode.
The icon "TAPE REC" appears on the display.
- 4 Press FWD PLAY /II [/II] or RVS PLAY /II [/II] button to begin recording.


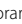

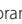



- To end recording, press  [stop] button.
- To temporarily pause the recording, press FWD PLAY /II [/II] or RVS PLAY /II [/II] button. Press it again to resume recording.

Recording from a CD/ audio file

- 1 Insert a disc or a USB device.
- 2 Insert a blank cassette tape into the tape deck.
- 3 Press the desired source button to select the source you want to record from.
For CD/ audio file-CD : Press CD/USB [CD/USB] button to select CD input.
For USB device : Press CD/USB [CD/USB] button to select USB input.
- 4 **To record all the tracks/files:**
Stop playback.
To record a single track/file:
Play the track/file to be recorded.
- 5 Press TAPE REC [TAPE rec] button to set the unit into recording standby mode.
The icon "TAPE REC" appears on the display.
- 6 Press FWD PLAY /II [/II] or RVS PLAY /II [/II] button to begin recording.
The icon "SYNC" appears on the display.



- To ensure good system performance, wait until the unit completely reads the disc/USB device before recording.
- To temporarily pause the recording, press FWD PLAY /II [/II] or RVS PLAY /II [/II] button. Press it again to resume recording.
- To end recording, press  [stop] button.
- During recording, it is not possible to listen to another source.

Program recording from a CD/ audio file

Desired CD tracks/ audio file can be programmed in the desired sequence and recorded onto a tape.

- 1 Insert a disc or a USB device.
- 2 Insert a blank cassette tape into the tape deck.
- 3 Press the desired source button to select the source you want to record from.
For CD/ audio file-CD : Press CD/USB [CD/USB] button to select CD input.
For USB device : Press CD/USB [CD/USB] button to select USB input.
- 4 Make sure that the unit is in stop mode.

continued to next page

- 5 Program the desired sequence of CD tracks/ audio file.**
See page 14 for programming procedure.
- 6 Press TAPE REC [TAPE rec] button to set the unit into recording standby mode.**
The icon "TAPE REC" appears on the display.
- 7 Press FWD PLAY ►/II [►/II] or RVS PLAY ◀/II [◀/II] button to begin recording.**
The icon "SYNC" appears on the display.



- To end recording, press ■ [stop] button.

Recording from a iPod

- 1 Connect a iPod to the iPod dock.**
- 2 Insert a blank cassette tape into the tape deck.**
- 3 Press iPod [iPod] button.**
- 4 Play the equipment connected to this unit.**
- 5 Press TAPE REC [TAPE rec] button to set the unit into recording standby mode.**
The icon "TAPE REC" appears on the display.
- 6 Press FWD PLAY ►/II [►/II] or RVS PLAY ◀/II [◀/II] button to begin recording.**



- To end recording, press ■ [stop] button.

Clock/timer operation

Clock setting

- 1 Press and hold TIMER SET button for more than 1 second.**
"CLOCK SETTING" appears on the display.
- 2 Press ENTER button.**
The hour indication will start flashing.
- 3 Press P.CALL/ALBUM ▲ or ▼ [p.call/album up or down] button to set the hours.**
- 4 Press ENTER button to enter the minute setting mode.**
The minute indication starts flashing.
- 5 Press P.CALL/ALBUM ▲ or ▼ [p.call/album up or down] button to set the minutes.**
- 6 Press ENTER button to set the minutes.**



- The clock setting will be erased when the power cord is disconnected or a power failure occurred.
- The **SEARCH/TUNING** [◀◀ or ▶▶] [◀◀ or ▶▶] search +/-] button can be used to move across the setting items.
- Pressing the **TIMER SET** button for more than 1 second will display the current time for about 20 seconds.

Timer setting

The system can switch on to CD, USB, TUNER, iPod or TAPE mode automatically at a preset time, serving as an alarm to wake you up.

The timer recording of radio programs onto a cassette tape is also possible.

Important!

Before setting the timer, ensure that the clock is set correctly.

When setting the timer (playback or recording) for TUNER, be sure to select the station you wish to tune in beforehand.

- 1 Press TIMER SET button.**
The hour indication starts flashing.
- 2 Set the time to start playback.**
Press P.CALL/ALBUM ▲ or ▼ [p.call/album up or down] button to set timer start hours and press ENTER button to store the setting. Repeat the same procedure to set the minutes.

3 Press ENTER button.

The icon "TIMER OFF" starts flashing.

4 Repeat the step 2 to set the time to stop the timer (off time).

5 Press ENTER button.

The icon "TIMER" flashes and the source display appears.

6 Press P.CALL/ALBUM ▲ or ▼ [p.call/album up or down] button to select the desired source and press ENTER button to store the setting.

The source switches as follows :
"CD" → "USB" → "TUNER" → "iPod" → "TAPE" → "REC TU" (recording tuner on tape) → ...

7 Press P.CALL/ALBUM ▲ or ▼ [p.call/album up or down] button to set volume level and press ENTER button to store the setting.

The icon "TIMER" changes from flashing to steadily lit.

The timer is now set.

8 Switch the system to standby mode.



- When reached the preset timer, the selected source will play or switch to standby mode after the timer has been activated.
- The **SEARCH/TUNING** [◀◀] or [▶▶] [◀◀] or [▶▶] **search +/-** button can be used to move across the setting items.

To activate/deactivate the timer

Press TIMER ON/OFF button.

If activated, the icon "TIMER" appears on the display.



- The timer off will not be activated if the starting and stopping time are the same.
- During timer setting, if no button is pressed within 20 seconds, the system will exit timer setting mode automatically.

Sleep timer setting

If the sleep timer is activated, the system will switch to standby mode after the selected time has expired.

Each press of the SLEEP button decreases the timer period by 10 minutes. The sleep timer can be set up to 90 minutes.

The icon "SLEEP" appears on the display.

The display will change to sleep time display and change as follows:

90 min → 80 min → 70 min → 60 min → 50 min
→ 40 min → 30 min → 20 min → 10 min → OFF
→ ...

While sleep mode is in active:

To deactivate the sleep timer

Press SLEEP button or press button to turn the power off.



- If timer off and the sleep off are all activated, the system will switch to standby mode by the earlier timer set.

In case of difficulty

Resetting the Microcomputer

The microcomputer may malfunction (unit cannot be operated, or shows an erroneous display) if the power cord is unplugged while the power is ON, or due to some other external factor. If this happens, execute the following procedure to reset the microcomputer and return the unit to its normal operating condition.

When the power is off (standby mode), press and hold down the [■ stop] button on the main unit for more than 2 seconds.

Unplug the AC cord and plug it back in if "FACTORY RESET FINISHED" is appears.

- Please note that resetting the microcomputer will clear the contents of the memory and return the unit to the state it was in when it left the factory.

Check that following guide for problem resolution.

General

No sound.

- ➔ Plug in AC cord securely.
- ➔ Set the VOLUME control to proper sound level.
- ➔ Make sure the source is set to the source you want to operate.
- ➔ Pull out the headphones plug from the headphones jack.

The left and right sound outputs are reverse.

- ➔ Check the speaker connections and location.

The system displays features automatically.

- ➔ Switch off the demo operation.

The system does not operate by pressing any buttons.

- ➔ Unplug the AC cord and plug it back in.

CD player operation

"NO DISC" is displayed.

- ➔ Insert a disc correctly (label side up).
- ➔ Clean the disc.
- ➔ Use a new or readable disc.
- ➔ Wait until the moisture condensation at the lens has cleared.

USB operation

"NO USB" is displayed.

- ➔ Insert the USB device properly.

Cannot play.

- ➔ The USB device is removed during playing or recording. Record songs again after formatting the USB device.

iPod operation

"NO iPod" is displayed.

- ➔ Insert the iPod properly.

"AUTH FAIL" is displayed.

- ➔ Disconnect the iPod and connect it again.
- ➔ Check the software version of the iPod. If it is not the latest one, update it.

Radio reception

Noise in radio.

- ➔ Tune to a correct frequency.
- ➔ Adjust the direction of the FM antenna.
- ➔ Adjust the position and direction of the AM antenna.
- ➔ Increase the distance between the system and TV or VCR.

Cassette deck operation

Cannot record.

- ➔ Replace the tape or cover tabs with adhesive tape.
- ➔ Clean the head.
- ➔ Use only NORMAL (IEC I) tape.
- ➔ Do not use a cassette with more than 90-minute recording time, for the tape used in such a cassette is very thin and tends to cause problem such as entanglement around the pinch roller or could be easily cut off.

Remote control unit

Does not function properly.

- ➔ Replace the batteries.
- ➔ Remove the obstacles.
- ➔ Move closer to the system when using the remote control and make sure that you are pointing at unit's remote sensor.

General information

Maintenance

Cleaning the cabinet

- Use a soft cloth slightly moistened with a mild detergent solution. Do not use a solution containing alcohol, spirits, ammonia or abrasive.

Cleaning discs

- When a disc becomes dirty, clean it with a cleaning cloth, wipe the disc from the center out. Do not wipe in circular motion.
- Do not use solvents such as benzene, thinner commercially available cleaners, or antistatic spray intended for analogue records.

Cleaning the heads and tape path

- To ensure good recording and playback quality, clean the heads, the capstans and pressure rollers after every 50 hours of tape operation.
- Use a cotton swab slight moistened with cleaning fluid.
- You also can clean the heads by playing a cleaning tape once.

Caution on condensation

Condensation (of dew) may occur inside the unit when there is a great difference in temperature between this unit and the outside. This unit may not function properly if condensation occurs. In this case, leave the unit for a few hours and restart the operation after the condensation has dried up.

Be specially cautious against condensation in the following circumstances:

When this unit is carried from one place to another across a large difference in temperature, when the humidity in the room where this unit is installed increases, etc.

Warning notice

In most cases it is an infringement of copyright to make copies of tapes or discs without the permission of the copyright owners. Anyone wishing to copy commercially available tapes or disc should contact the mechanical copyright protection society limited or the performing rights society limited.

iPod are trademarks of Apple Inc., registered in the U.S. and other countries.

Windows Media is a trademark of Microsoft Corporation registered in the U.S. and other countries.

Information on Disposal of Old Electrical and Electronic Equipment and Batteries (applicable for EU countries that have adopted separate waste collection systems)



Products and batteries with the symbol (crossed-out wheeled bin) cannot be disposed as household waste.



Old electrical and electronic equipment and batteries should be recycled at a facility capable of handling these items and their waste byproducts.



Pb

Contact your local authority for details in locating a recycle facility nearest to you. Proper recycling and waste disposal will help conserve resources whilst preventing detrimental effects on our health and the environment.

Notice: The sign "Pb" below the symbol for batteries indicates that this battery contains lead.

Specifications

Main unit

Amplifier section

Rated output power
.....45 W + 45 W (1 kHz, 10% T.H.D., at 6 Ω)

Tuner section

FM tuner section
Tuning frequency range
.....87.5 MHz ~ 108.0 MHz
AM tuner section
Tuning frequency range
.....531 kHz ~ 1,602 kHz

CD player section

Laser.....Semiconductor laser
Over sampling.....8 fs (352.8 kHz)
Laser wave length.....760 ~ 800 nm
Laser power class.....Class 1 (IEC)
D/A conversion.....1 Bit

USB interface

USB standard.....USB 1.1/2.0
Maximum supply current.....500 mA
File system.....FAT 16/ 32
MP3 decode
.....Compliant with MPEG-1/2 Audio Layer-3
WMA decode
.....Compliant with Windows Media Audio 9
Recording format.....MP3, 192 kbps/44.1 kHz

Cassette deck section

Track.....4-track, 2-channel stereo

General

Power consumption.....75 W
Dimensions.....W : 160 mm (6-5/16")
H : 269 mm (10-9/16")
D : 345 mm (13-15/16")
Weight (net).....5.5 kg (12.1 lb)

Speakers

Enclosure.....Bass-reflex type
Speaker configuration
Woofer.....100 mm, cone type
Tweeter.....35 mm, cone type
Impedance.....6 Ω
Maximum input level.....50 W
Dimensions.....W : 160 mm (6-5/16")
H : 268 mm (10-9/16")
D : 218 mm (8-9/16")
Weight (net).....2.2 kg (4.9 lb) (1 piece)

iPod dock

Video output format.....NTSC/PAL
Composite video output level.....1 Vp-p (75 Ω)
Dimensions.....W : 103 mm (4-1/16")
H : 31 mm (1-1/4")
D : 65 mm (2-9/16")
Weight (net).....0.16 kg (0.35 lb)

Memory back up function

Please note that the following items will be deleted from the unit's memory if the power cord is disconnected from the AC outlet.

- Input selector settings
- Volume level
- Sound control (preset equalizer, bass enhancement)
- Tuner setting

Notes:

- Kenwood follows a policy of continuous advancements in development. For this reason specifications may be changed without notice.
- Sufficient performance may not be exhibited at extremely cold locations (where water freezes).

For your records

Record the serial number, found on the back of the unit, in the spaces designated on the warranty card, and in the space provided below. Refer to the model and serial numbers whenever you call upon your dealer for information or service on this product.

Model _____ Serial Number _____

KENWOOD